

## TECHNICAL DATA

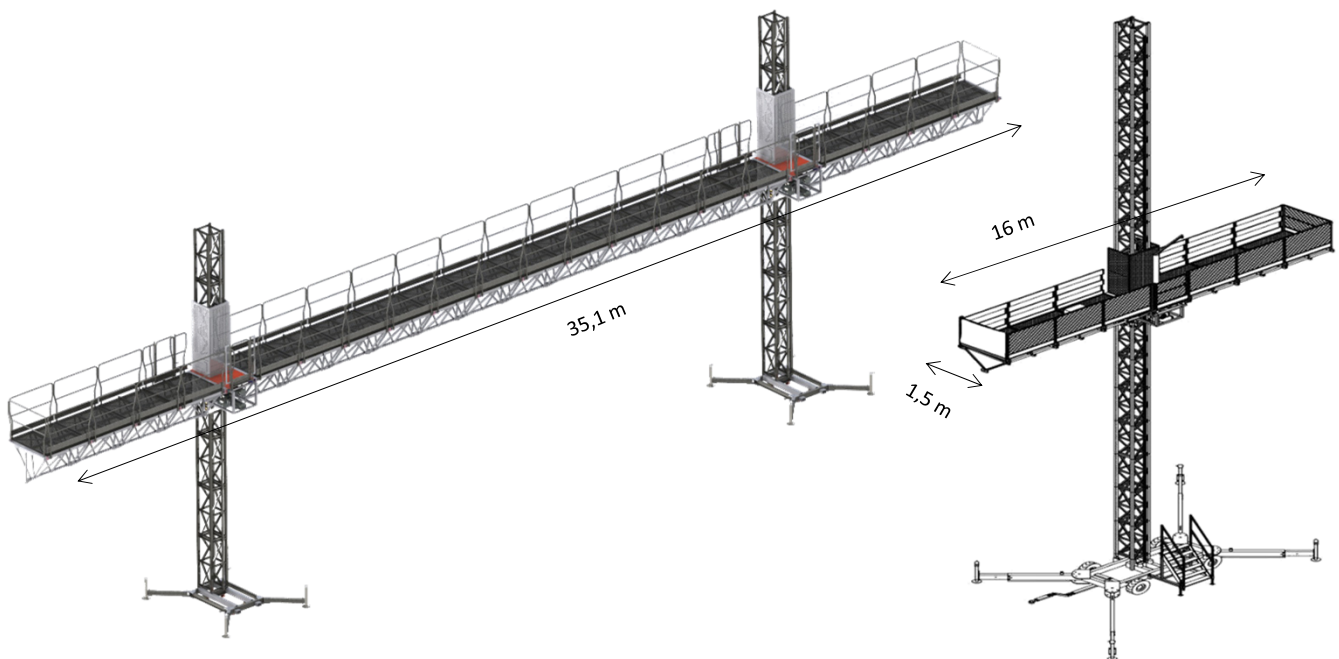
Max Length Twin Mast	35,1 m	Max Length Single Mast	16 m
Max Payload Twin Mast	5500 Kg	Max Payload Single Mast	3000 Kg
Motors Power Twin Mast	16 Kw	Motors Power Single Mast	8 Kw
Speed	9 m / min	Motors per drive unit	2 x 4 Kw
Platform deck width	1,50 m	Standard wall extensions	1 m (longer on request) (*)
Wall Ties Distance	6 m -12 m	Free Standing Height	6 m (10 m with Small FS chassis) (20 m with BIG Free Standing chassis)
Mast element weight	140 kg	Mast element height	1,5 m
Mast type	Square trellis	Rack Module	M8 - Bolted Rack
Max working height	250 m (*)	Power Supply	400 V - 50 Hz- Threephase (*)

Notes: Hot dip galvanised platform sections, guardrails, Mast sections, Wall Ties, Ladders, Chassis and outriggers.  
Drive Unit also can be Hot Dip Galvanized on request - Possibility to put telescopic extensions on both sides (front and rear)

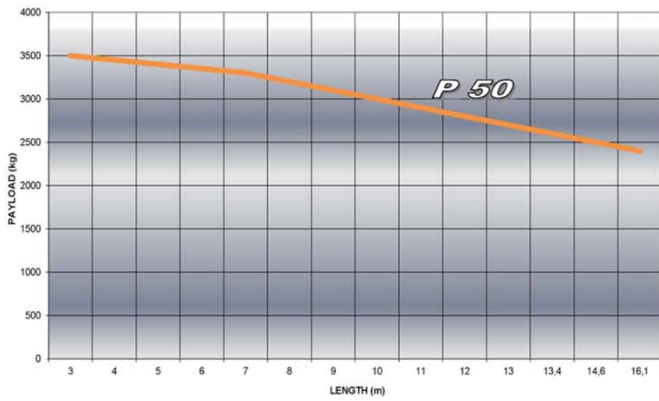
## SATETY FEATURES

- First class geared motors self braking type
- Centrifugal emergency brake for each geared-motor, with automatic activation in case of overspeed
- Automatic levelling device in twin mast configuration checked by double limit switch
- Deck floors made in anti-sliding h.d. galv. steel sheet
- Castor wheels on the base for easy placement
- Levelling Jacks included in the base
- Low voltage Electrical panel
- Detection of correct phase
- Limit switch checking mast element presence
- Emergency push button
- Ascent, Descent, overrun and Emergency limit switches
- Erection left / right drive unit stop
- Low Temperature Kit , Hours counter and Anti collision Kit (trip wire kit) available on request (\*\*)
- Sound alarm when platform moving
- External independent parachute emergency brake for each drive on request ("P" VERSION)
- Device for manual descent in case of power failure
- Access gate (h.d.galvanised) provided with safety interlock
- Rubber shock absorber at the base
- Rack interrupted on the terminal mast element to avoid overrun
- 220 V socket on board for tools
- Changing phase device
- Limit switch for doors and ramps
- Double Limit switch up / down / levelling
- Mast protection nets
- Overload device on request (\*\*)
- Collapsible platform to work behind the mast complete of safety limit switch on request (\*\*)

NOTES: (\*) : Other values on request - (\*\*) : Optional



SINGLE MAST CLIMBERS - LOAD CHART



TWIN MAST CLIMBERS - LOAD CHART

